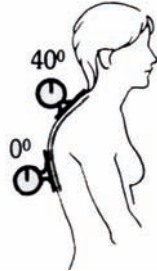


PLURI

A series of measuring tools for use when adapting medical aids.

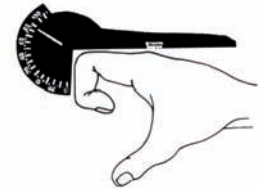
PLURIMETER

The problem to measure the angle relative between different body parts can be solved by using a PluriMeter.



PLURIDIG

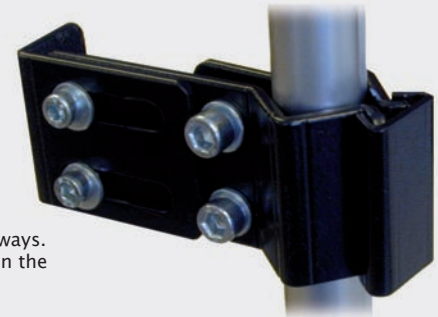
The PluriDig is a simpler tool to measure the angle between different body parts.



THE UNIVERSAL CLAMP



Example of area of application: The universal clamp is easily mounted to round as well as square tubes with dimensions of 20.0 – 30.0 mm. The clamp is delivered either untreated or with a black surface treatment.

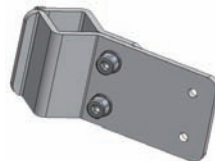


Anatomic SITT uses the clamp in different ways. For example, together with holders between the driving handles. (Art. 7022).

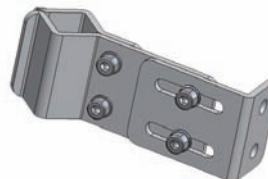


Test box

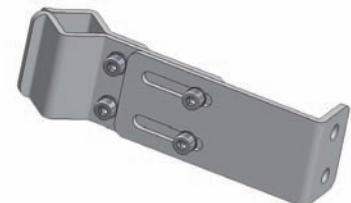
Standard clamp



Adjustable clamp



Extra long adjustable clamp



HOLDER BETWEEN DRIVING HANDLES

The holders between the driving handles are mounted around the wheelchair's driving handles/back tubes. They fit round as well as square tubes with dimensions of 20,0 – 30,0 mm Holder for head support included. For easy mounting of Anatomic head support, PLUSH & ProSerie, purchase two inner sleeves according to the article list. An elevation stay for Sternum support and X-strap can also be purchased if needed.



Box 6137, SE-600 06 NORRKÖPING, Phone. +4611-16 18 00, fax +4611-16 20 05

www.anatomicstt.com